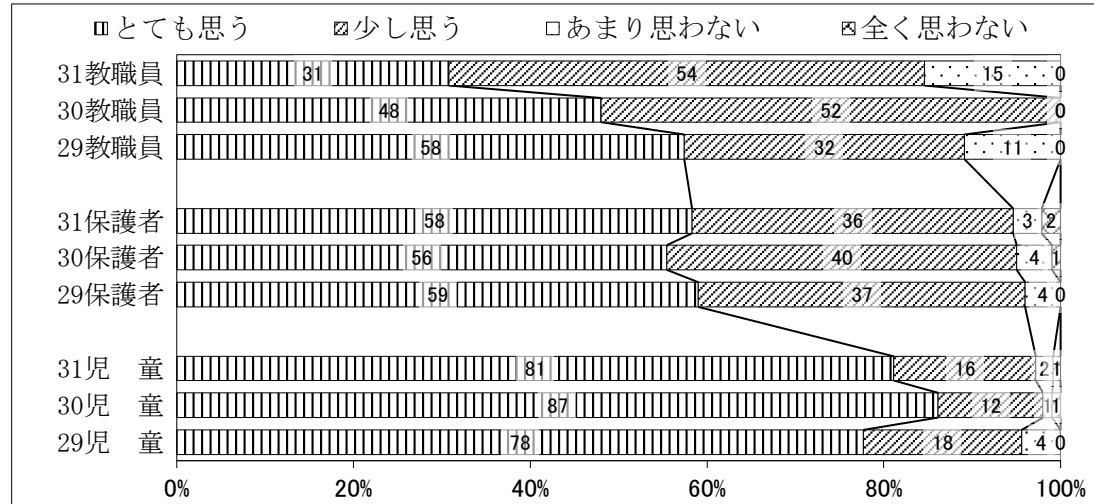


学校評価の結果 (H29~H31の比較)

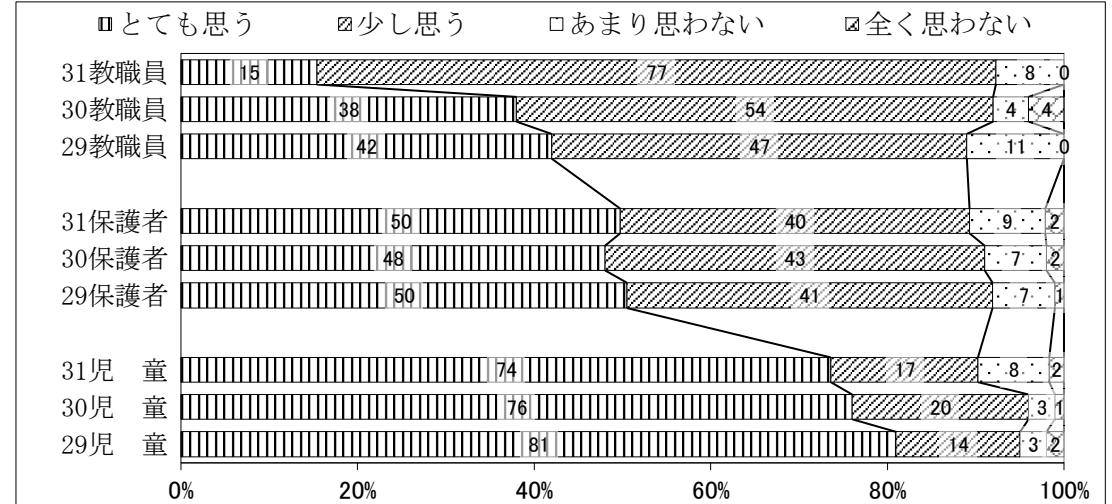
資料3 - (1)
篠田小学校

児童・保護者・教師の回答

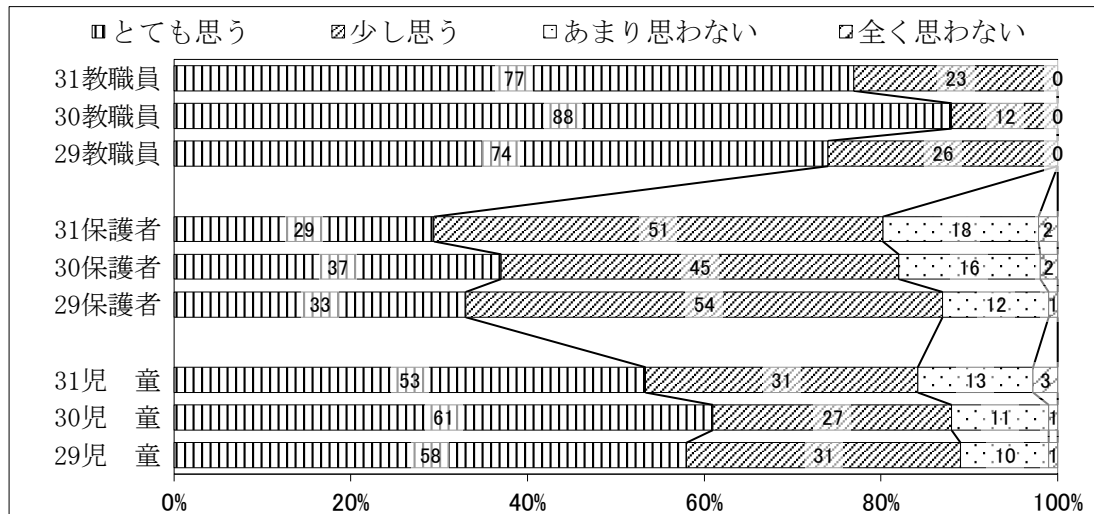
1 学級で仲良く



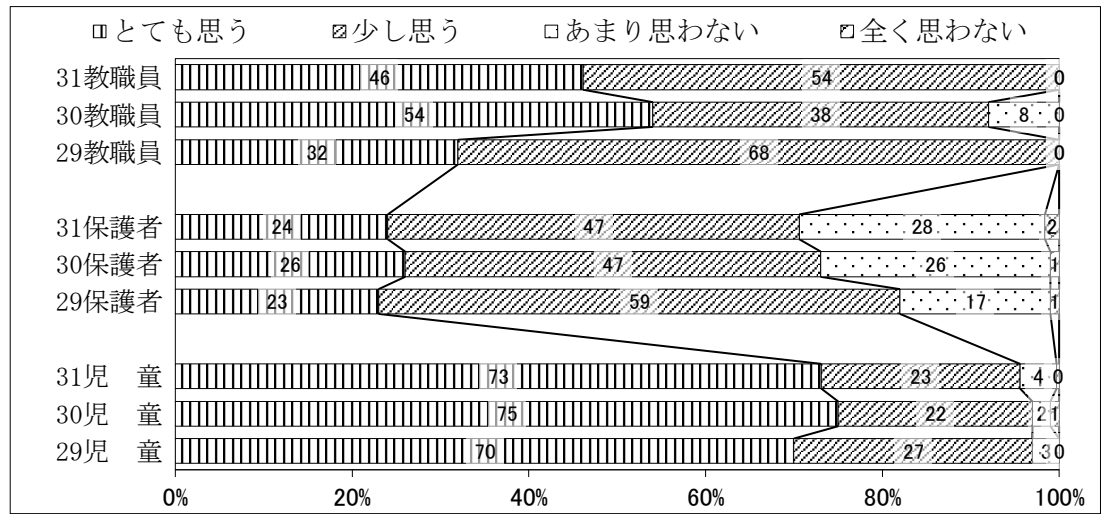
2 通学団で仲良く



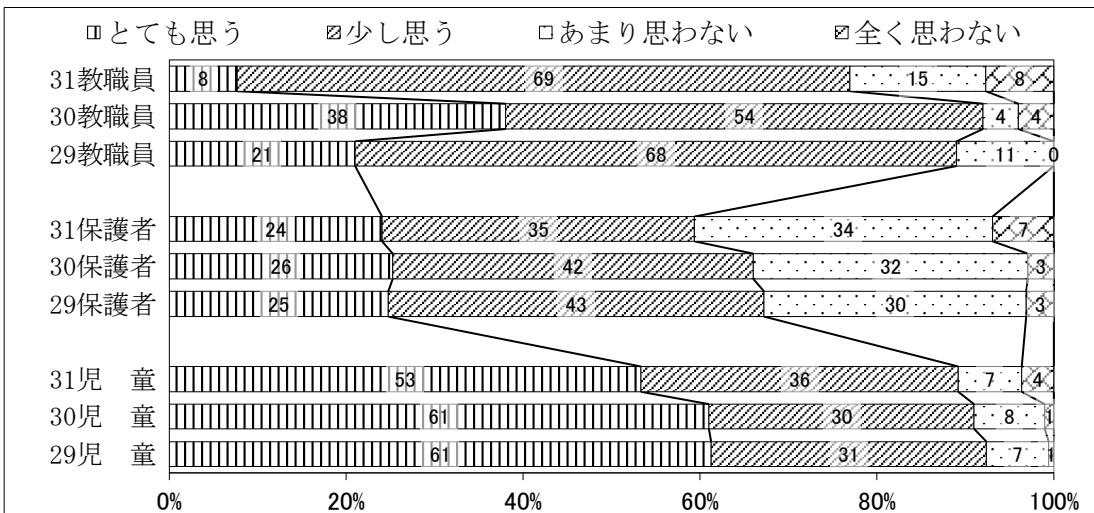
3 しっかりあいさつ



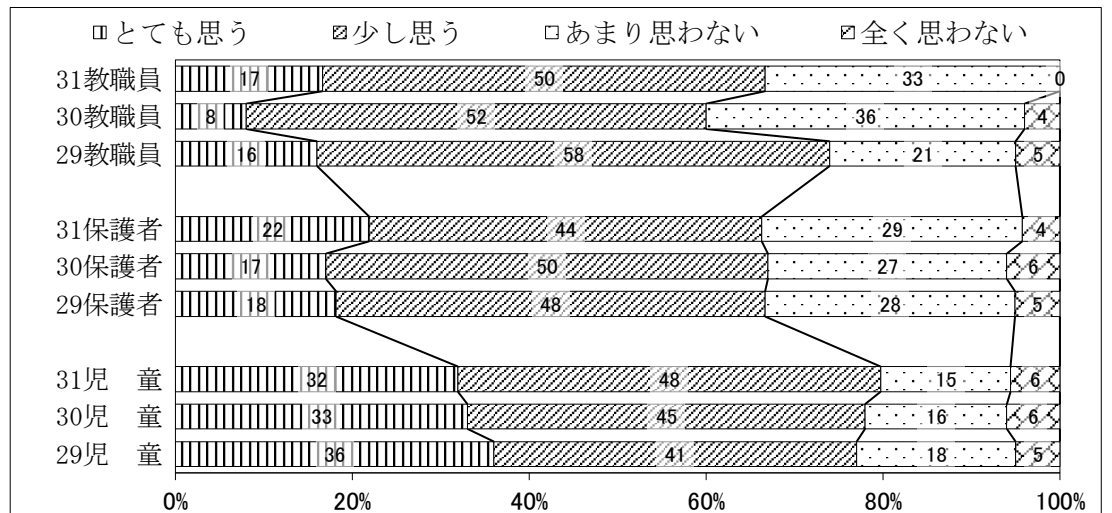
4 人の話をしっかり聞く



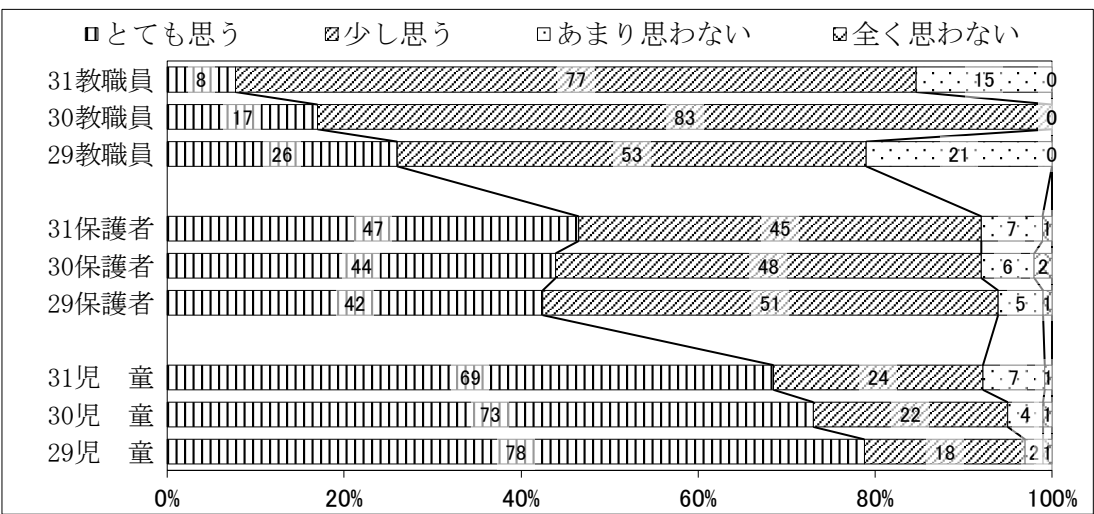
5 履き物の整頓



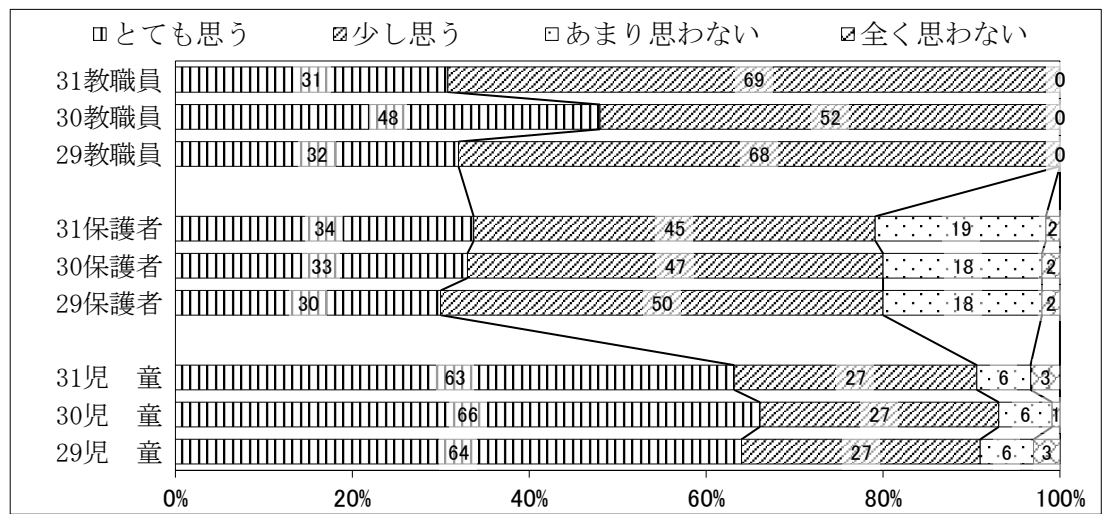
6 忘れ物をしない



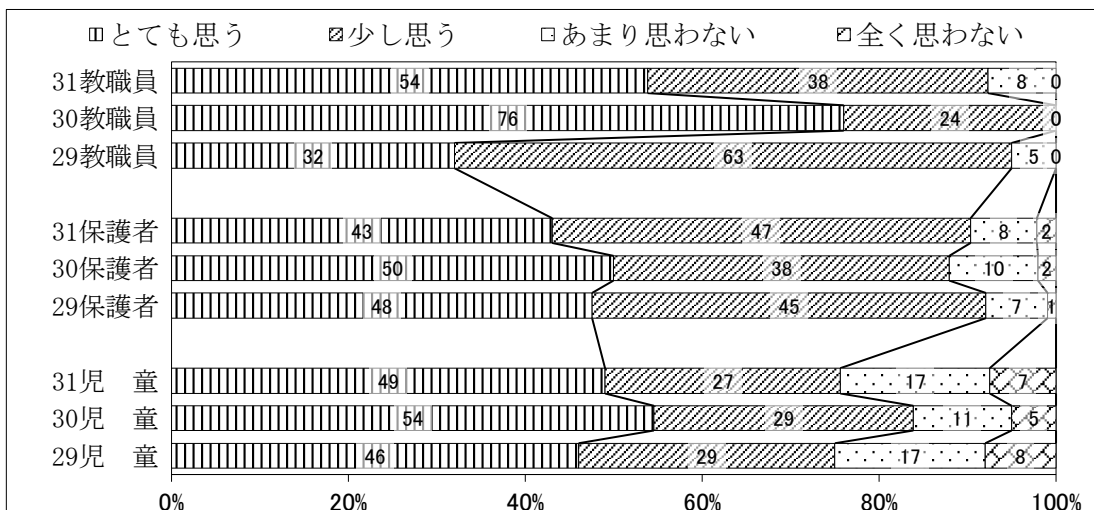
7 交通ルールを守る



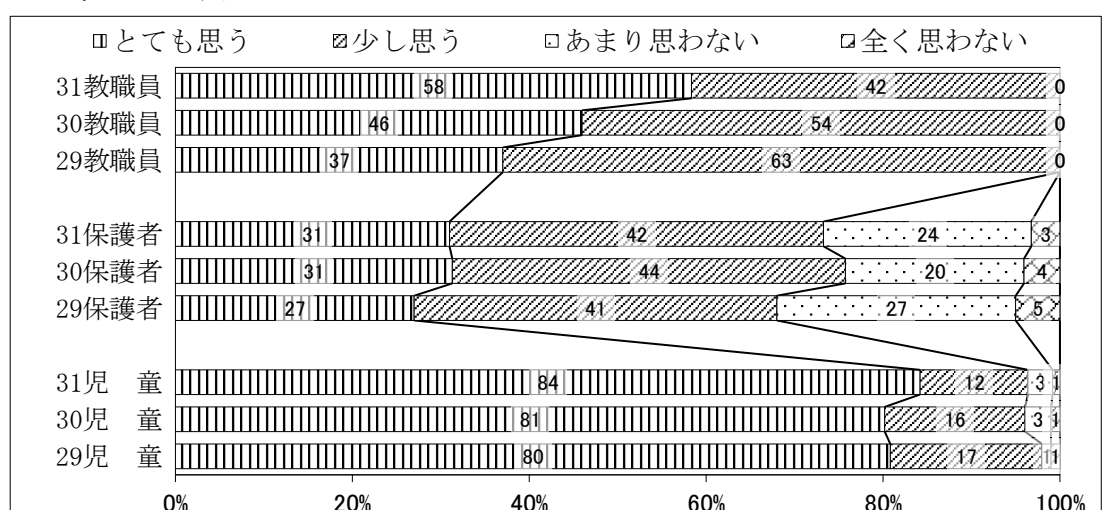
8 楽しい・わかりやすい授業



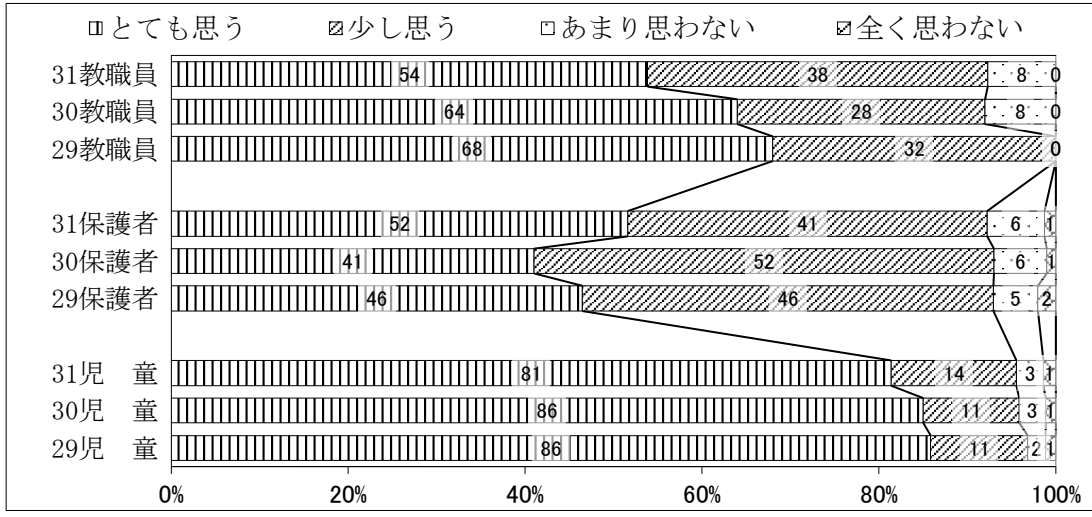
9 子どもの相談にきちんと対応



10 家庭学習・適切な課題

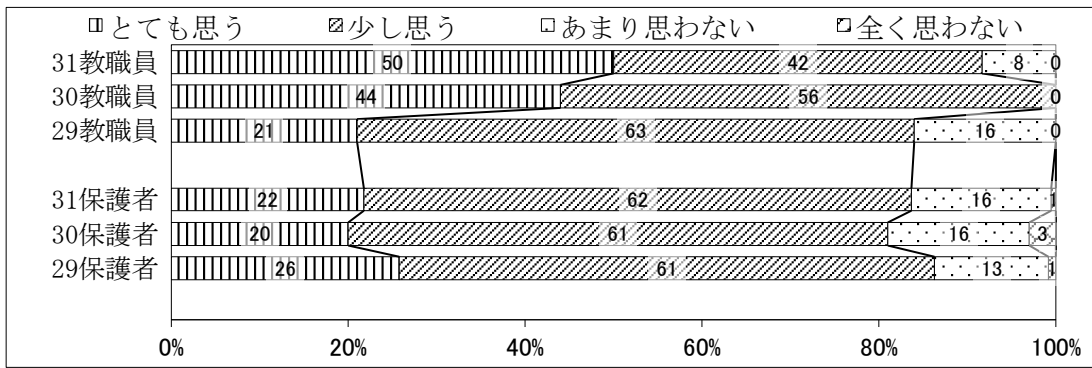


11 行事は楽しい

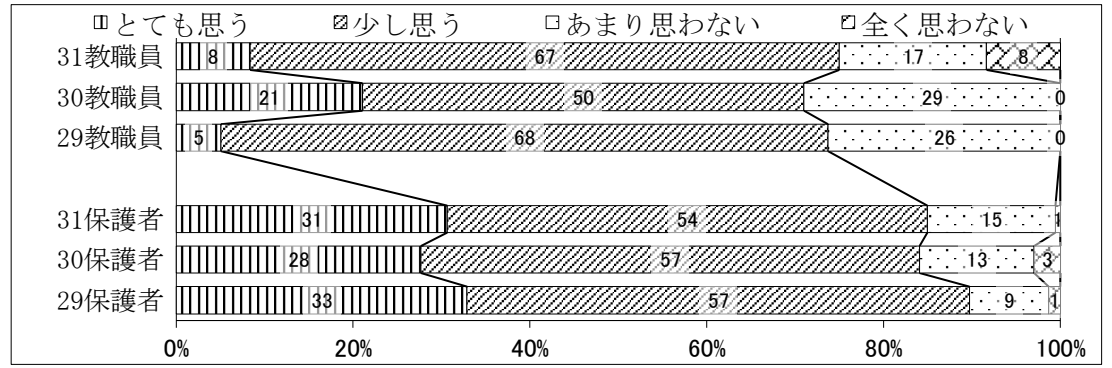


保護者・教師の回答

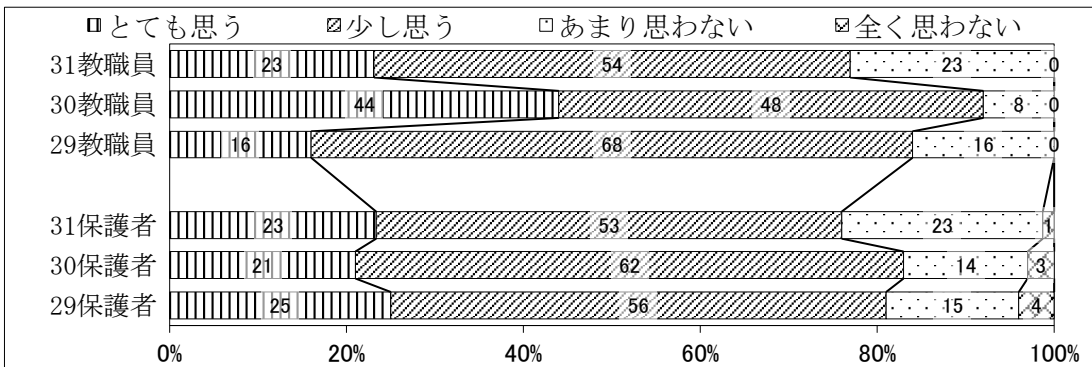
12 個を大切に授業



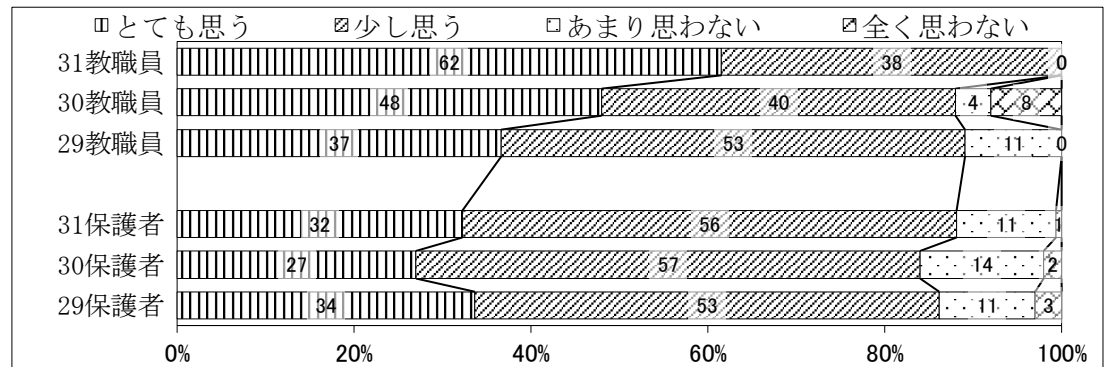
13 基礎・基本の定着



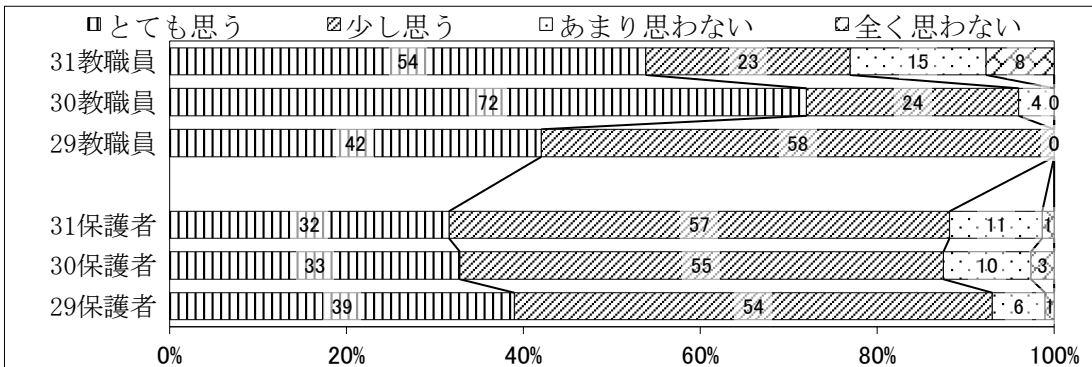
14 保護者の声を反映



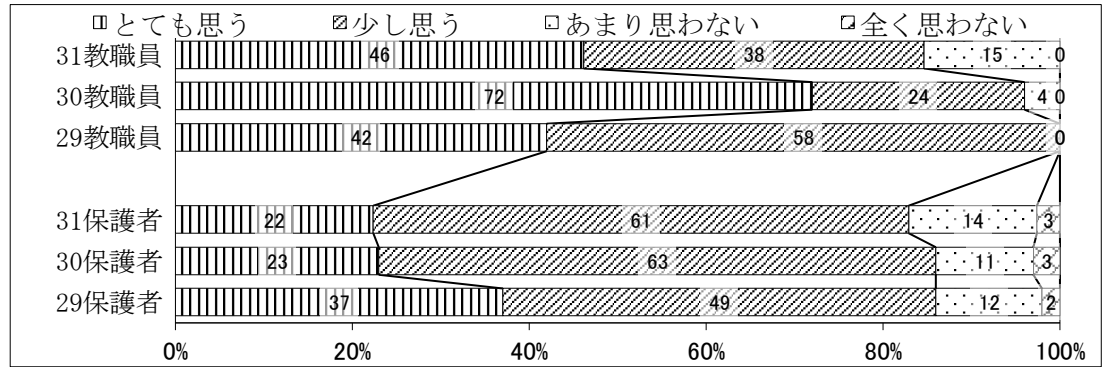
15 わかりやすく情報発信



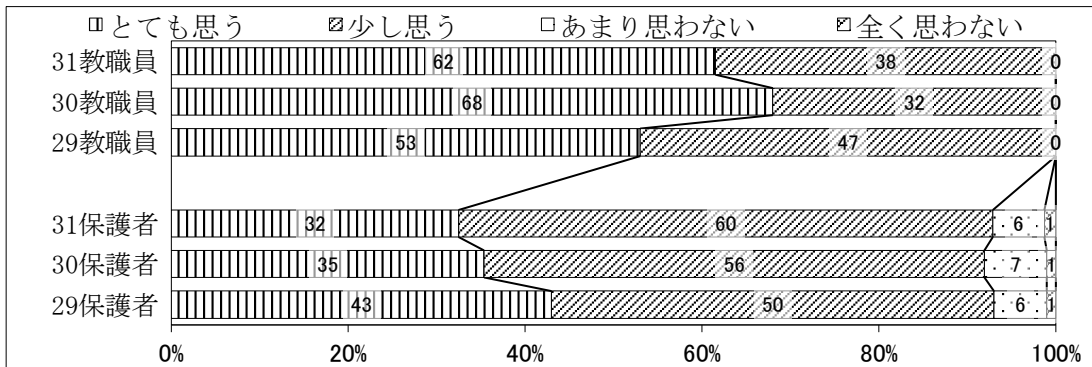
16 保護者の悩みにきちんと対応



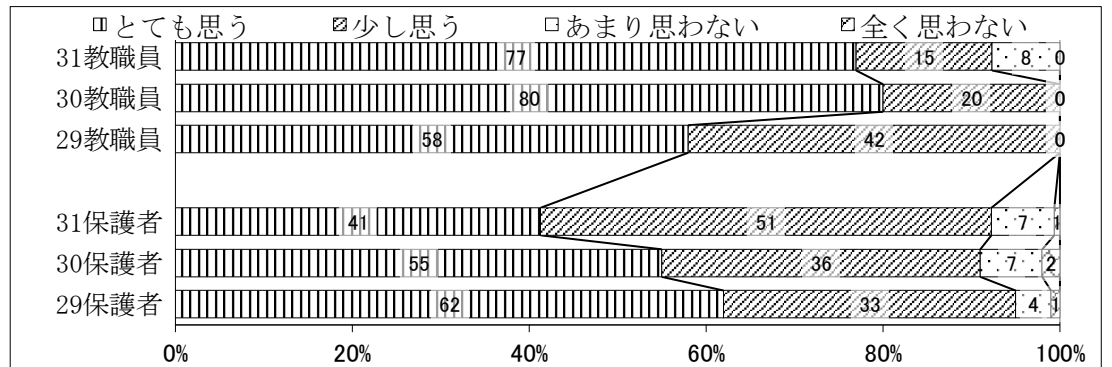
17 いじめ・不登校がない学校



18 子どもの安全・事故防止

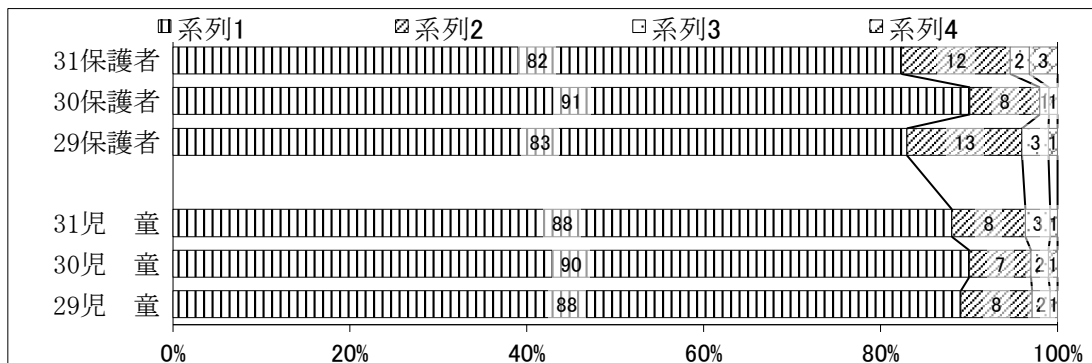


19 家庭との連携・連絡

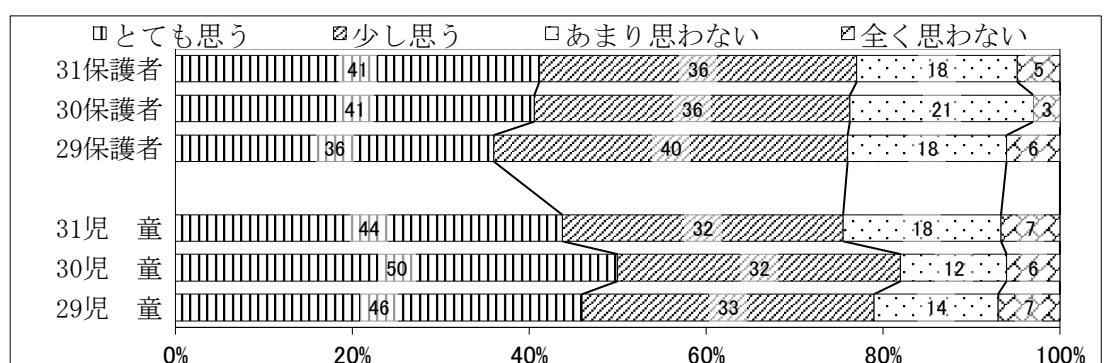


児童・保護者の回答

20 毎日朝ご飯

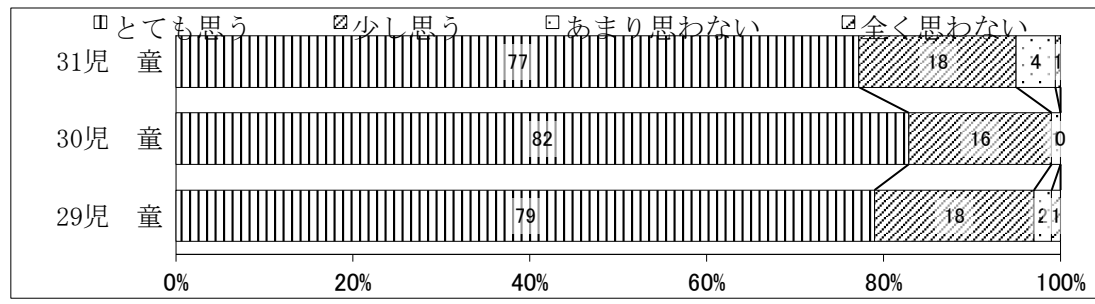


21 早寝早起き

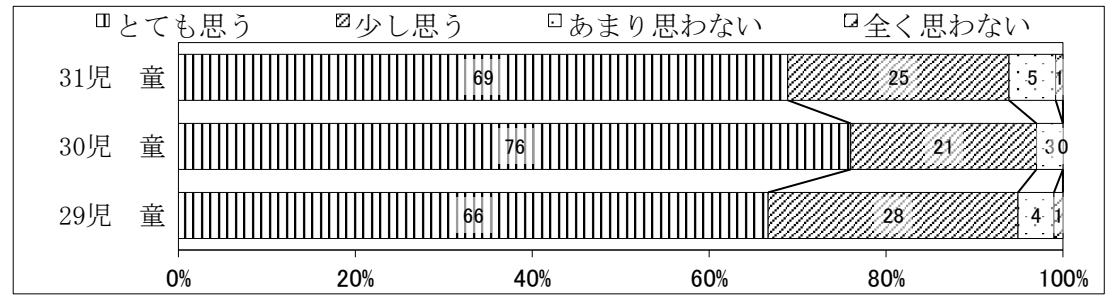


児童の回答

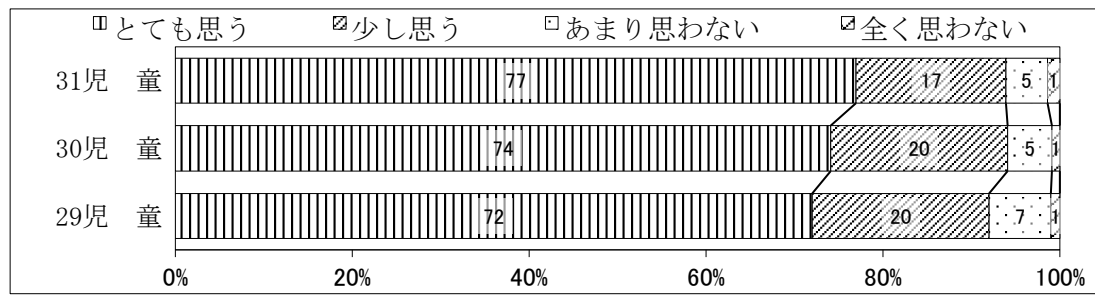
22 係・当番の仕事



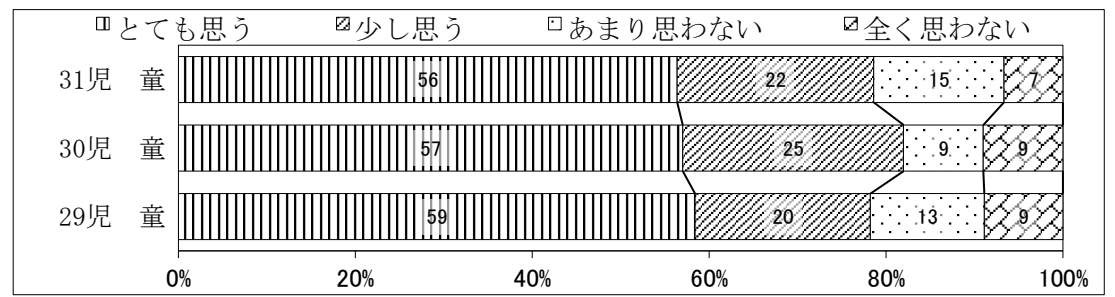
23 掃除は一生懸命



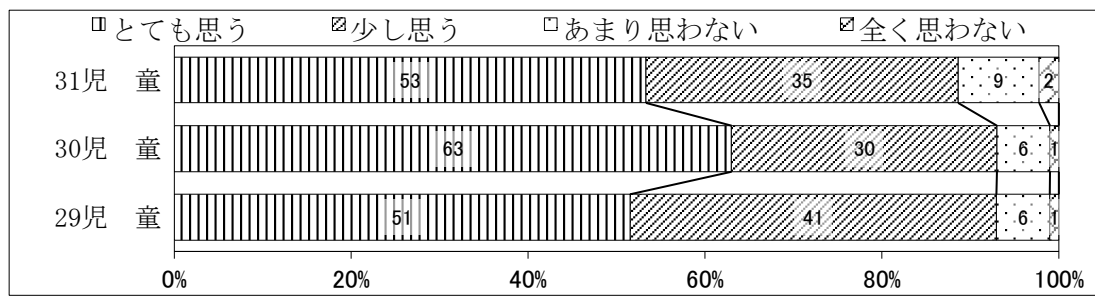
24 給食のマナー・残さない



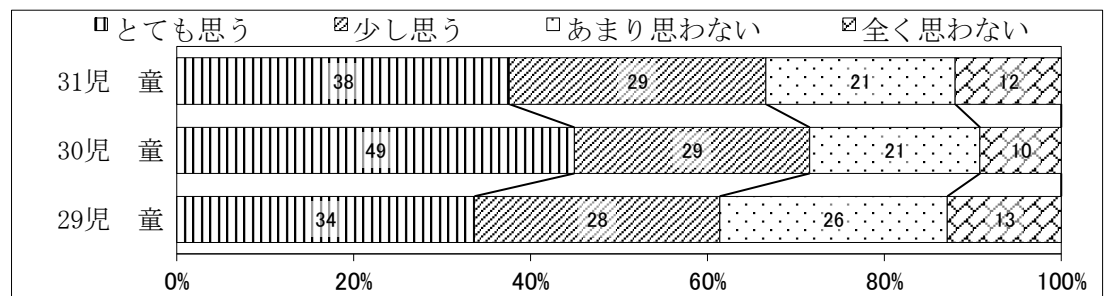
25 休み時間は元気よく



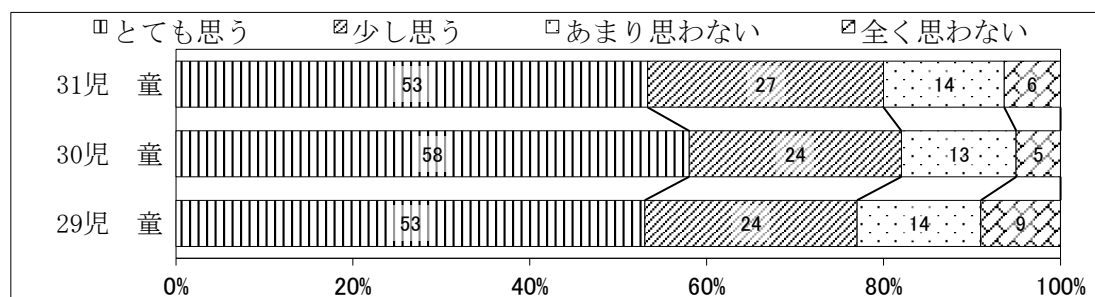
26 廊下は静かに



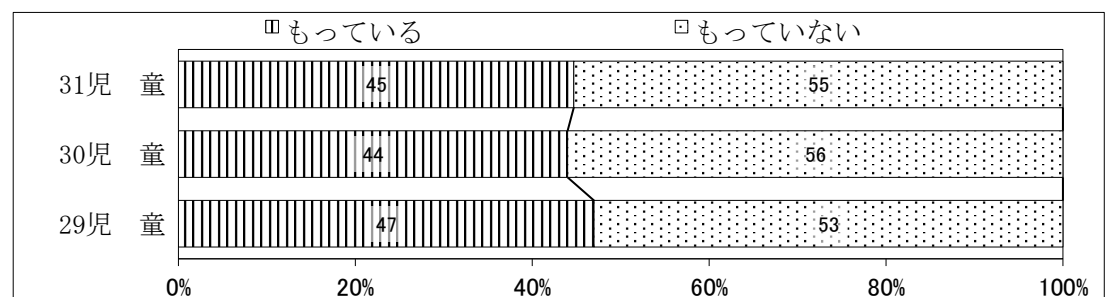
27 挙手・発表



28 学校の様子を家で話す



29 スマートフォン又は携帯電話をもっている



教師の回答

30 タイムカード等で、勤務時間の適切な管理

